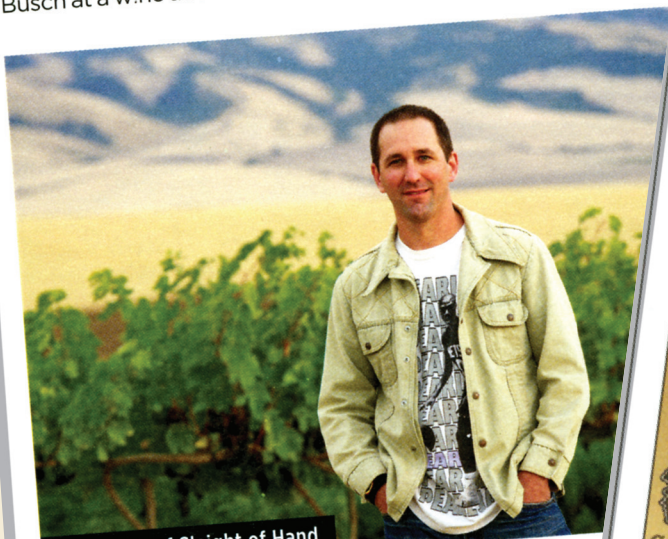


# Wine Spectator

www.winespectator.com

## SLEIGHT OF HAND MAGIC IN THE GLASS

When Trey Busch left his job as an assistant winemaker at Dunham Cellars to start his own winery, he decided to name the new label after a song by Pearl Jam, a favorite band when he moved to Seattle (from Atlanta) in 2000. He had some fun with his wines as well, naming his Cabernet Sauvignon *The Illusionist*, his Syrah *Levitation* and his Merlot blend *The Archimage*. The tongue-in-cheek names belie the seriousness of the wines, which achieve remarkable density, depth and supple textures at relatively moderate prices. Partners Jerry and Sandy Solomon divide their time between San Diego and Sun Valley, Idaho, but they invested in Walla Walla instead of California after they met Busch at a wine auction.



Trey Busch of Sleight of Hand



### 95 Sleight of Hand Cabernet Sauvignon Columbia Valley The Illusionist 2008 \$45

Supple, almost satiny, with gorgeous cherry, raspberry and rhubarb flavors mingling with hints of clove and rose as the finish sails on and on. Offers impressive depth and length. Drink now through 2018. 322 cases made.—H.S.

## SPECTATOR SELECTIONS

**Cabernet Sauvignon Columbia Valley The Illusionist 2008 (95, \$45)** Exhibits gorgeous cherry, raspberry and rhubarb flavors on a satiny texture

**The Archimage Columbia Valley 2008 (93, \$45)** Exhibits a silky mouthful of currant, blackberry, cola and spice flavors

**Syrah Columbia Valley Levitation 2008 (92, \$40)** Refined, with raspberry, boysenberry, plum and floral flavors, liling through the expressive finish

**Syrah Walla Walla Valley The Funkadelic 2009 (92, \$60)** There's nice transparency to the slightly gritty blueberry, licorice and black olive flavors

## SLEIGHT OF HAND CELLARS

Walla Walla, Washington